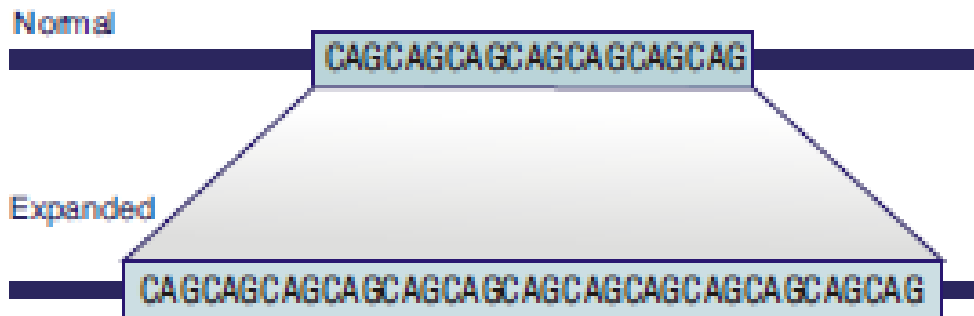


Spinocerebellar Ataxia (SCA)

Genetic Testing For SCA :

Detects CAG Repeat Expansions



Genetic Aspects of SCA

Type	Chromosome location of gene	Normal repeat size	Expanded repeat size
SCA 1	6	6 - 36	39 - 83
SCA 2	12	15 - 31	34 - 220
SCA 3	14	12 - 40	55 - 86
SCA 6	19)	4 - 18	21 - 33
SCA 7	3	4 - 19	37 - 300
SCA 12	5	7 - 28	66 - 78

SCA

NDG

Spinocerebellar Ataxia (SCA)

SCA

